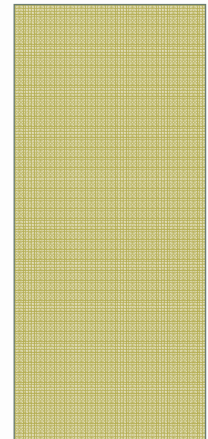


GROUP 1

ANTIGUA & BARBUDA, BERMUDA,
JAMAICA, SURINAME, ST. LUCIA, CARICOM

TRADE IN SERVICES WORK SHOP DISCUSSION



JAMAICA

Department of
Tourism

- Exit Survey (Expenditure)
- Special Event Surveys/ Other Specific Surveys

Statistical
office

- Household Survey (every 3 years/Domestic/outbound expenditure)
- Business Establishment Survey (Supply side/ National Accounts)

Bank of
Jamaica

- BOP (Travel Services)

Department of
Immigration

- Volume data/Country of Origin/ purpose of trip

ST. LUCIA

Tourism Board

- Exit Survey (Expenditure/ Motivation)
- Special Event surveys

Statistical office

- Business Establishment Survey (Annual Survey)
- Household expenditure Survey

ECCB

- BOP (Travel Services)

Inland Revenue

- Company Financial Statements
- Hotel tax data

Immigration

- ED Cards (volume/type of arrival/ origin)

SURINAME

Department
of Tourism

- Volume of Tourist

Statistical
office

- Business Establishment Survey (Travel agents/Hotels)

Central Bank

- BOP (Travel Services Estimates)

ANTIGUA & BARBUDA

Ministry of
Tourism

- Exit Survey (Expenditure/volume/
Demography)

Statistical
office

- Business Establishment Survey (Supply side/
National Accounts/ BOP)

ECCB

- BOP (Travel Services) / National
Accounts

Department of
Immigration

- ED cards (Volume data/Country
of Origin/ purpose of trip)

BERMUDA

Department
of Tourism

- Exit Survey (Expenditure)

Statistical
office

- Household Survey
(Domestic/outbound expenditure)
- Business Establishment Survey
(Supply side/ National
Accounts/BOP)

Department of
Immigration

- Volume data/Country of Origin/
purpose of trip

PRODUCERS

| Country | Travel | Tourism | Collaboration |
|-------------------|--------------|----------------------------|---------------|
| Bermuda | DOS (BOP) | DOS (TSA) | Yes (DOT) |
| Antigua & Barbuda | ECCB (BOP) | MOT | Yes |
| St. Lucia | ECCB(BOP) | CSO (Hotels & Restaurants) | Yes |
| Suriname | Central bank | CSO (Establishment Survey) | Yes |
| Jamaica | Central bank | Statin JA | Yes |

ISSUES

- Reluctance from stakeholder to provide data
- No having the capacity/recourses to collect data
- No using the recommended methodological framework for data collection
- Differing interest from organizations that collect and compile data
- Data gap (lack of exit survey, BOP, Household survey Establishment survey)
- Absence of SUT

RECOMMENDATIONS

- Review questionnaires to make sure they are aligned with recommended methodology
- Develop and strengthening institutional arrangements/ utilizing resources and data sharing
- Building relationships with stakeholders
- Keeping an updated business register

INTERNATIONAL ORGANIZATIONS

- Provide technical support and infrastructure to assist in data collection, compilation and dissemination
- Recommendation for useful software

NEXT STEPS

- Each country needs to:
 - Outline all Inputs needed for TSA
 - Do a complete review of it data inventory
 - Determine data gaps
 - Determine level of statistical needs
 - Review resources
 - Work to fill gaps
 - Use a phased implementation approach

THANK YOU

